



Somatic Cells Test

LSCC - Lactoscan Somatic Cell Counting 1.2.0.66

Referece

5/20/2018 22:44:51 PM

ID= 1D

System

Cow milk

Dilution 1.0

Result

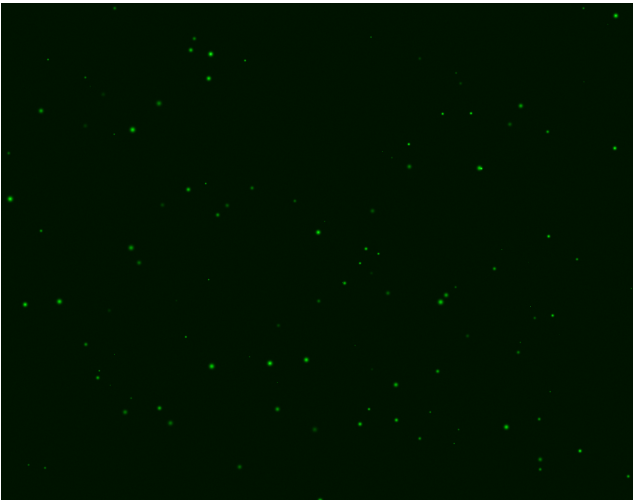
16 snapshots, covering 1.87 uL

Average cell size 7.6 um

Cells per mL 294e+3

Example picture

000000001-D-05.TIF



Cell size histogram

Number of cells

